

Llantwit Cottage

In 1846 Wallace persuaded his brother John to find work with him in Neath, their mother and sister Frances also wished to join them and Wallace rented a cottage next to Llantwit Church less than a mile from the town. It was here Wallace stayed until he embarked on his journey to the Amazon with Henry Bates in 1848.



It had a nice little garden and yard...going down to the Neath Canal, immediately beyond which was the River Neath, with a pretty view across the valley to Cadoxton and the fine Drumau Mountain.

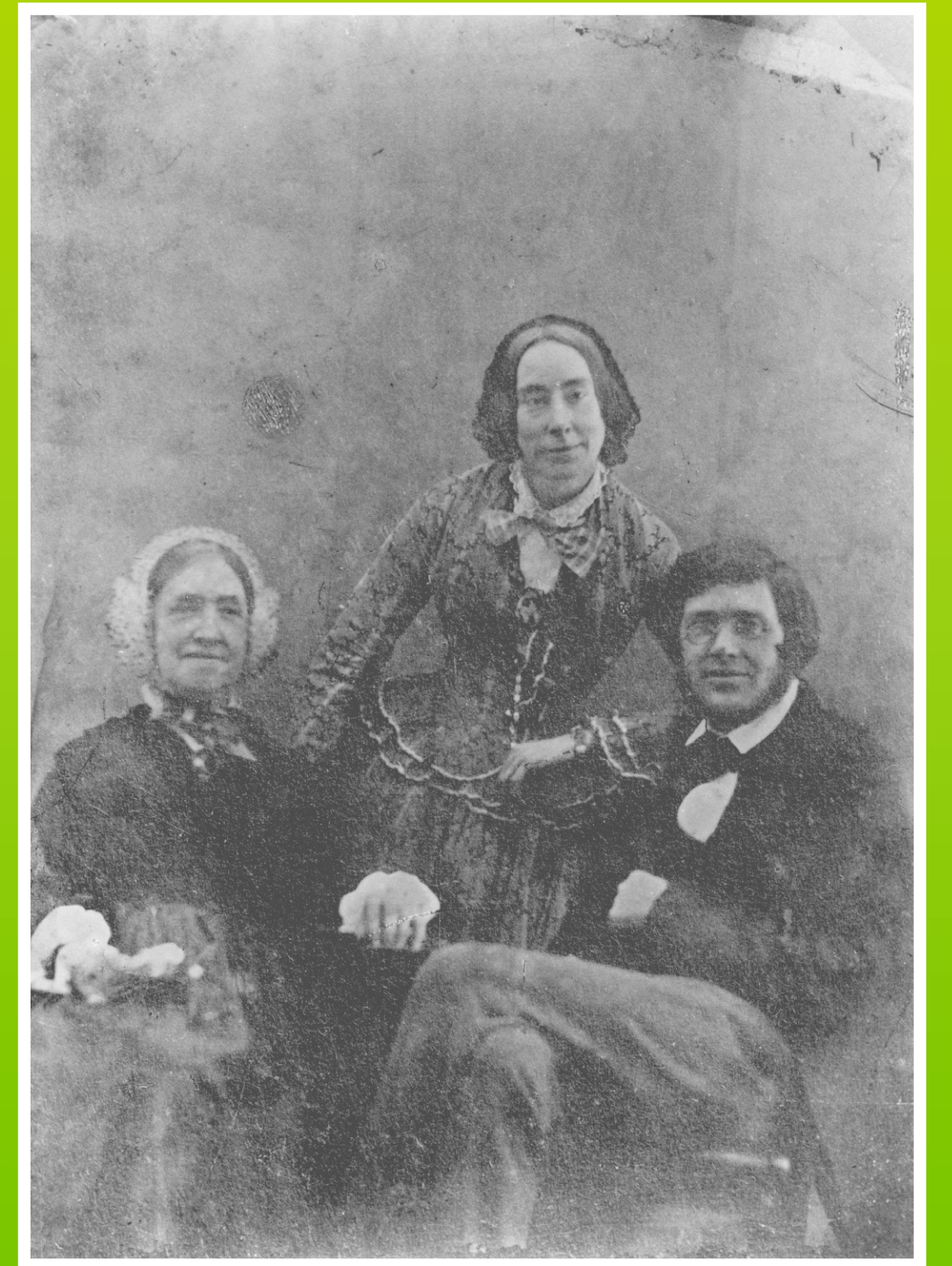


Image courtesy of the Natural History Museum



Llantwit Cottage & Llantwit Church. Neath Museum Collection



Neath Canal & River

Wallace's time in Neath was not without incident! His brother John, a carpenter by trade, had built a small boat light enough to carry two to three people. On one occasion Wallace and his brother persuaded their mother to travel with them to Swansea. Having successfully navigated the Neath and Tennant Canal one way the family made their return voyage to Neath only to have the boat capsize near the Neath River bridge. Soaked through and refusing to enter the vessel again, Mrs Wallace walked in dripping clothes along the canal path home to Llantwit cottage.



Neath River Bridge – Neath Museum Collection

